

CellFlow

CellFlow Ind1000 SCS



CellFlow air cleaners from LightAir represent the very best in air cleaning technology. They might not look like a normal air cleaner and they certainly don't work like a normal air cleaner.

The **CellFlow** range relies on the **EcoPrecision™** filter. This is an electrostatic filter that can be easily cleaned. Several of the range have a self cleaning or semi self cleaning mechanism.

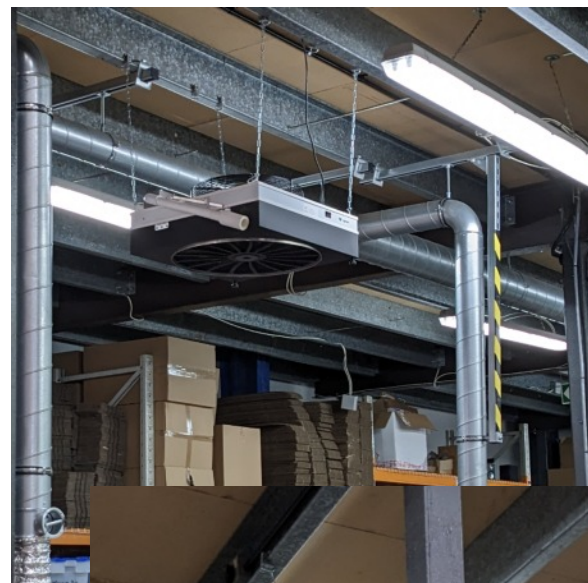
- Very quiet
- Very high filtration efficiency, equivalent of H14 HEPA
- Very low energy consumption
- Very low running costs
- Effective filtration of viruses, bacteria and mould spores
- Effective filtration of soot, smoke, pollen and other particulates
- Excellent performance against PM10, PM2.5 and PM0.1

	CellFlow Ind1000
Air flow capacity m3/hr	1000
Energy consumption (watts)	21 - 65
Efficiency rate (m3/hr per watt)	15
Noise (dB(A))	21 - 48
Dimensions (cm)	66 x 60 x 18
Weight (kg)	18
Mounting	Ceiling hung or free standing
Construction materials	MDF/plastic/aluminium
Colour	Gray
Power supply	230v/50Hz/1Ph
High density ioniser	yes
Prefilter	Open cell foam type
Main Filter type	cleanable electrostatic spiral
Main Filter	EcoPrecision™ long life filter made from recycled paper
Degree of filtration **	H14 level. PM 0.1 99.99%
Filter cleaning	Semi self cleaning
CCM capacity over time ***	Top rating P4
Typical filter life	24 months
Fan	Brushless AC-motor with Hyblade® technology from ebmpapst GmbH
Controls	On board
Fan Speeds	1
Standards	CE, UKCA

Notes

** CellFlow technology is certified by inerteK Group according to standard ANSI/AHAM AC-1-2015

*** Industry leading 98% remaining CADR, tested according to ind Std GB/T18801-2015. CCM acronym for Cumulative Clean Mass



Get In Touch

Call: 0845 6880112
Email: info@adremit.co.uk

Our Address

Puravent, Adremit Limited, Unit 5a, Commercial Yard, Settle, North Yorkshire, BD24 9RH

CellFlow is the industry leading filtration technology that is utilised in the range of air cleaners from LightAir.

At the core of every **CellFlow** air cleaner from LightAir is an **EcoPrecision™** filter which is a precisely wound spiral of recyclable paper that is charged to attract the oppositely charged microscopic particles carried by the airflow.

The **EcoPrecision™** filter presents virtually no resistance to the passing air. This means that the fan is not only quiet but it uses very little energy.

The remarkably frugal energy consumption of fan is the main reason why the **CellFlow** air cleaners have incredibly low Life Cycle Cost (LCC).

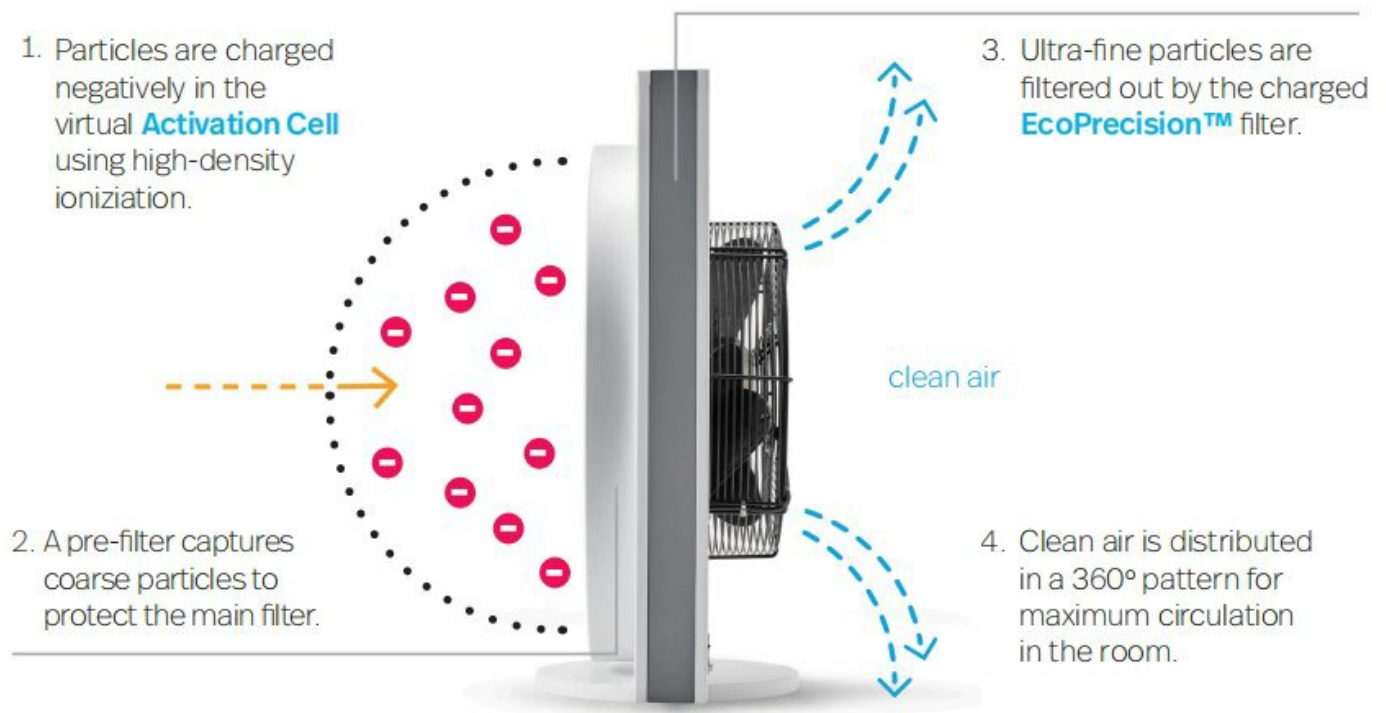
H14 HEPA equivalent filtration of;

- Microbes (Bacteria, Viruses, Spores)
- Fugitive dust from industry
- Smoke
- Pollen
- Transport pollutants
- Ultra fine dust
- Soot particles

CellFlow technology ensures;

- Staff safety
- Production processes reliability
- Product cleanliness **and low running costs.**

The principles of the patented CellFlow technology



Self Cleaning SC

CellFlow models with self cleaning will automatically clean the **EcoPrecision™** filter. The removed dust is collected into a vacuum bag. The vacuum bag is changed as part of periodic maintenance of the unit.

Semi Self Cleaning SCS

CellFlow models with semi self cleaning have the cleaning mechanism but do not have the on board vacuum system, so the unit would instead be cleaned by connection to a conventional vacuum cleaner.

These cleaning mechanisms reduce the frequency of filter changes and contribute to the ultra low Life Cycle Costs associated with the **CellFlow** range.



Watch video on how **CellFlow** technology



Get In Touch

Call: 0845 6880112
Email: info@adremit.co.uk

Our Address

Puravent, Adremit Limited, Unit 5a, Commercial Yard, Settle, North Yorkshire, BD24 9RH